



MRS. SHARMA'S CLASS EXPERIMENT

Third Grade

Ms. Klein's Science Class



IS YOUR HOUSE REALLY THAT CLEAN?

Summary: This experiment will expose how much bacteria is on common household items. This experiment is important because it will demonstrate the importance of handwashing and cleaning common items your home.



QUESTION:

Which item in your home has the most bacteria?

HYPOTHESIS:

I think the household pen will have the most bacteria.

These are the items we are testing:

- Laptop keyboard
- Car keys
- Household pen

MATERIALS:

- 3 petri dishes with agar
- 3 cotton swabs
- 1 bacteria kit instruction booklet



PROCEDURES:

Step 1 Rub the cotton swab on the laptop keyboard.

Step 2 Then rub the swab on the agar and seal the container.

Step 3 Now you need to label your petri dish with: "laptop keyboard."

Step 4 Rub the cotton swab on the car keys.

Step 5 Then rub the swab on the agar and seal the container.

Step 6 Now you need to label your petri dish with: "car keys."

Step 7 Rub a new cotton swab on the household pen.

Step 8 Then rub the swab on the agar and seal the container.

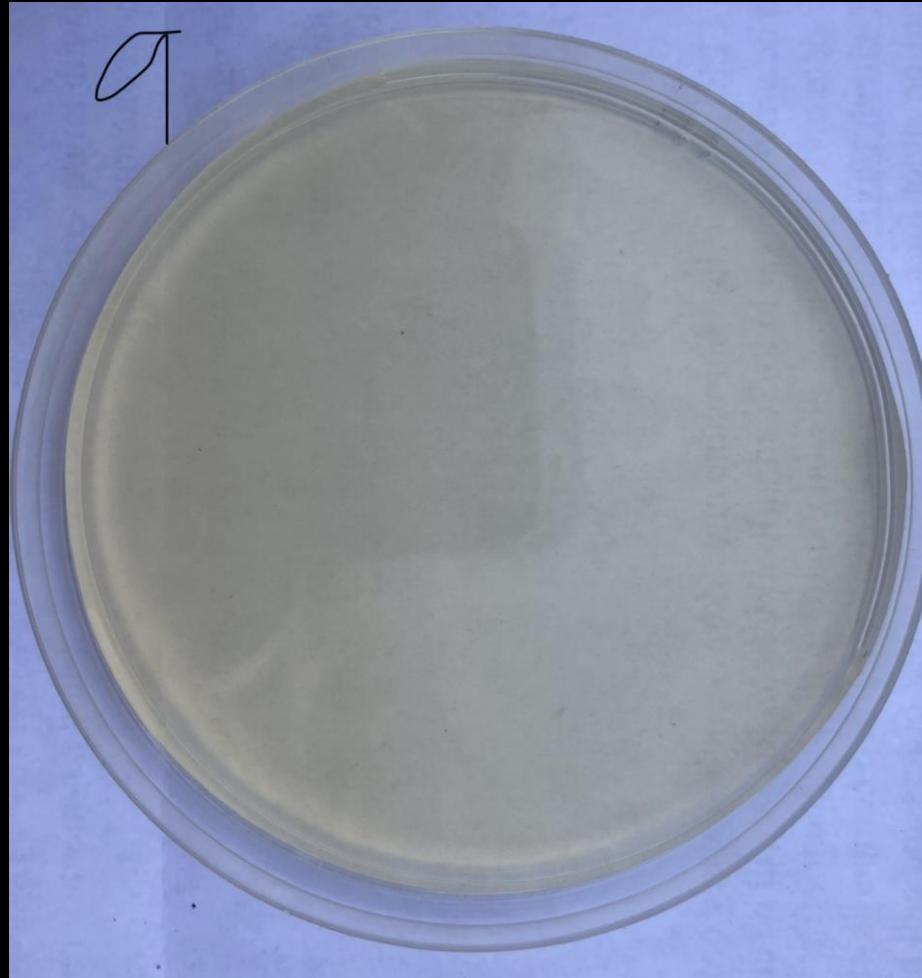
Step 9 Now you need to label your petri dish with: "household pen."

Step 10 Review instruction manual and let the petri dishes sit for one week. During the week, make observations and take photos.

DATA:

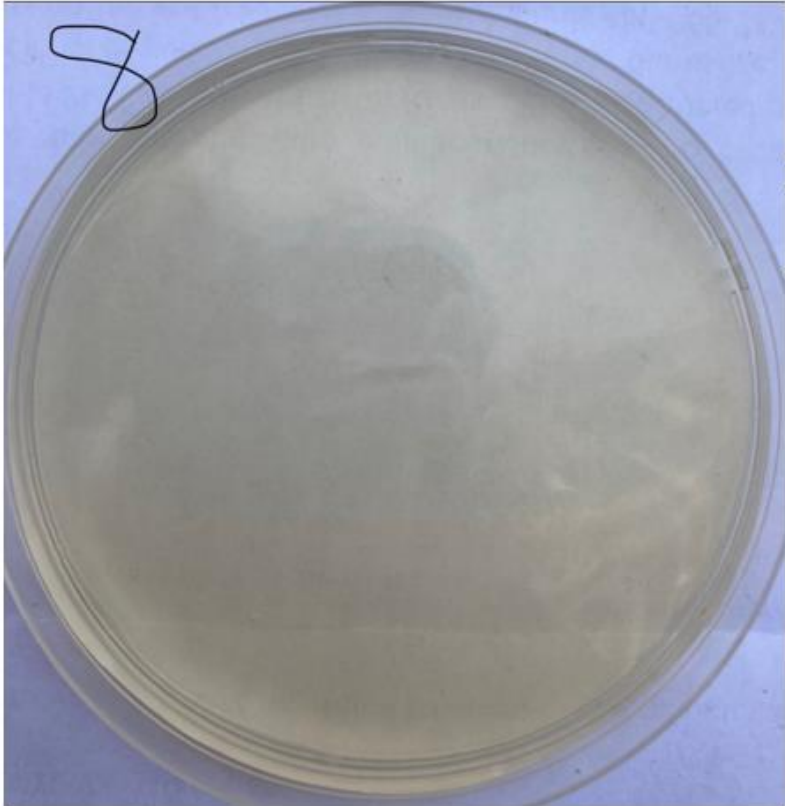
The Control: Day 3

We did not see any bacteria growing on our control for day 3. We compared this petri dish to our other petri dishes that were used to test specific items.

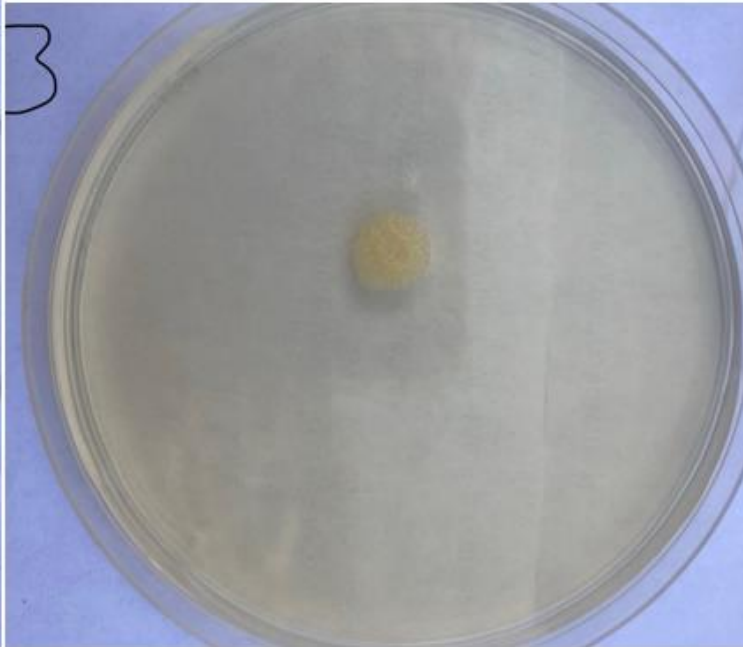


Observation: Day 3

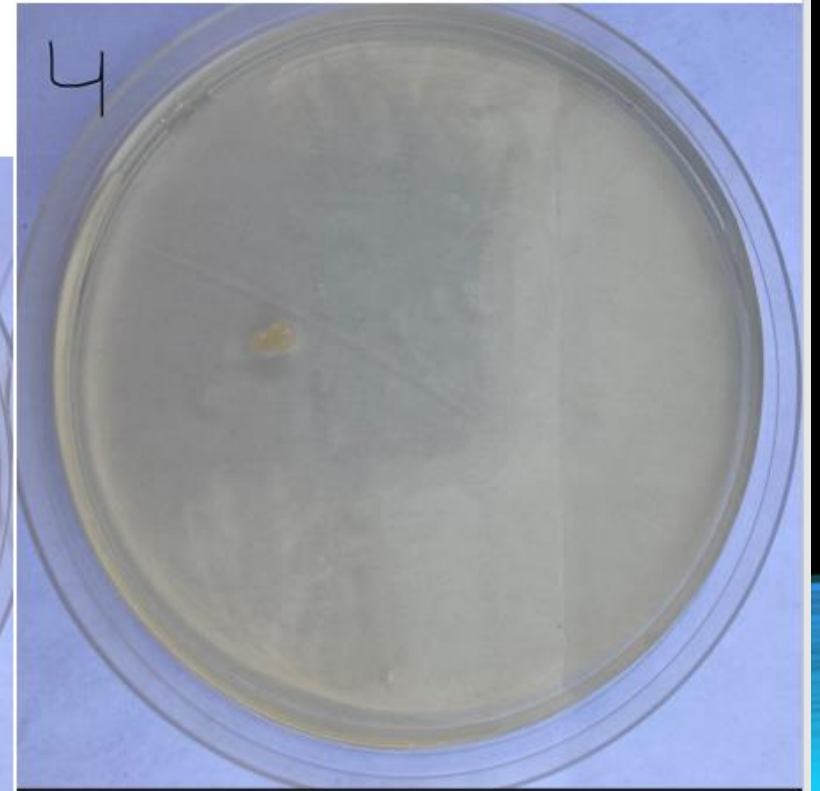
laptop keyboard



household pen



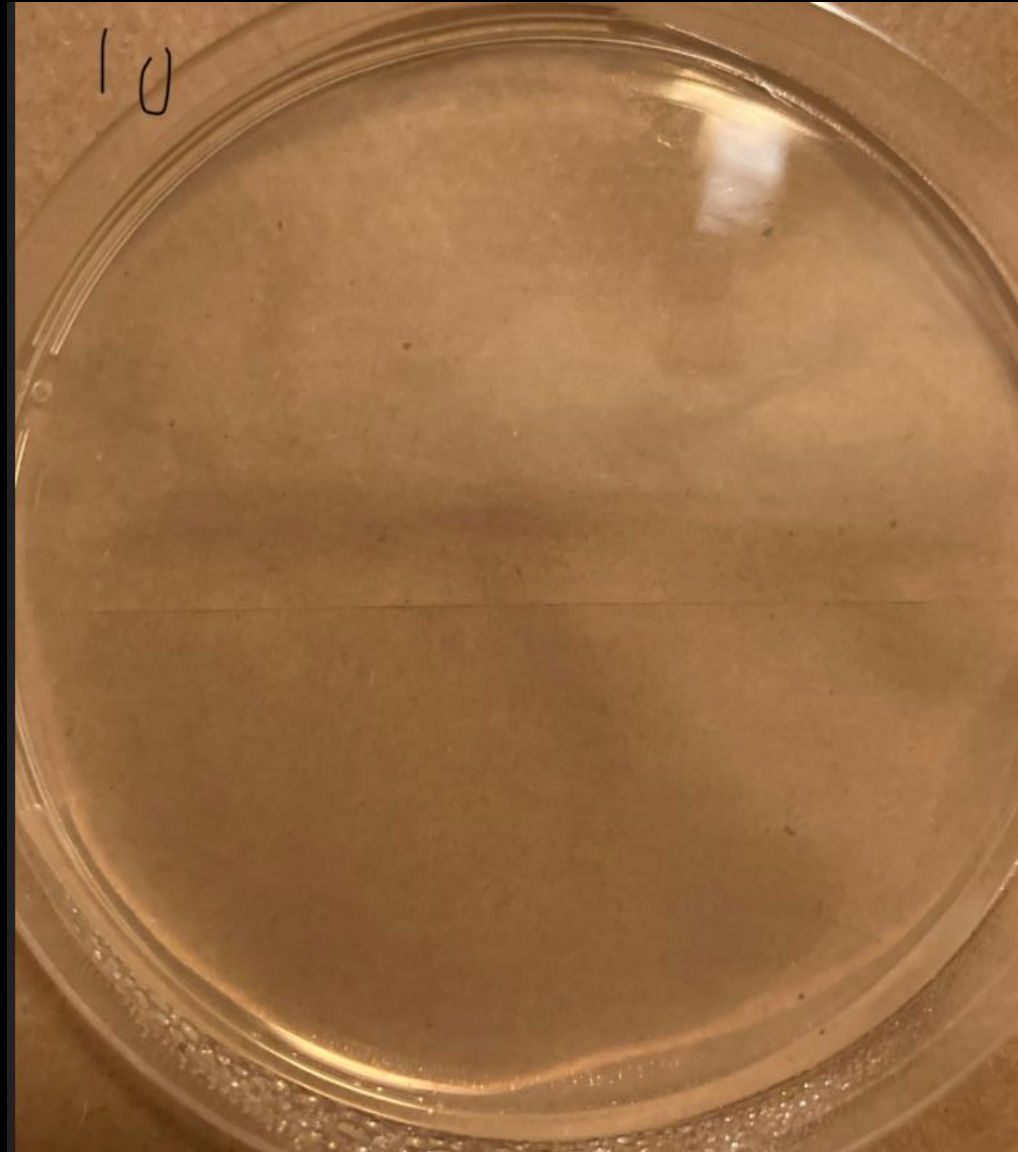
car keys



The household pen has the largest cluster of bacteria growing so far.

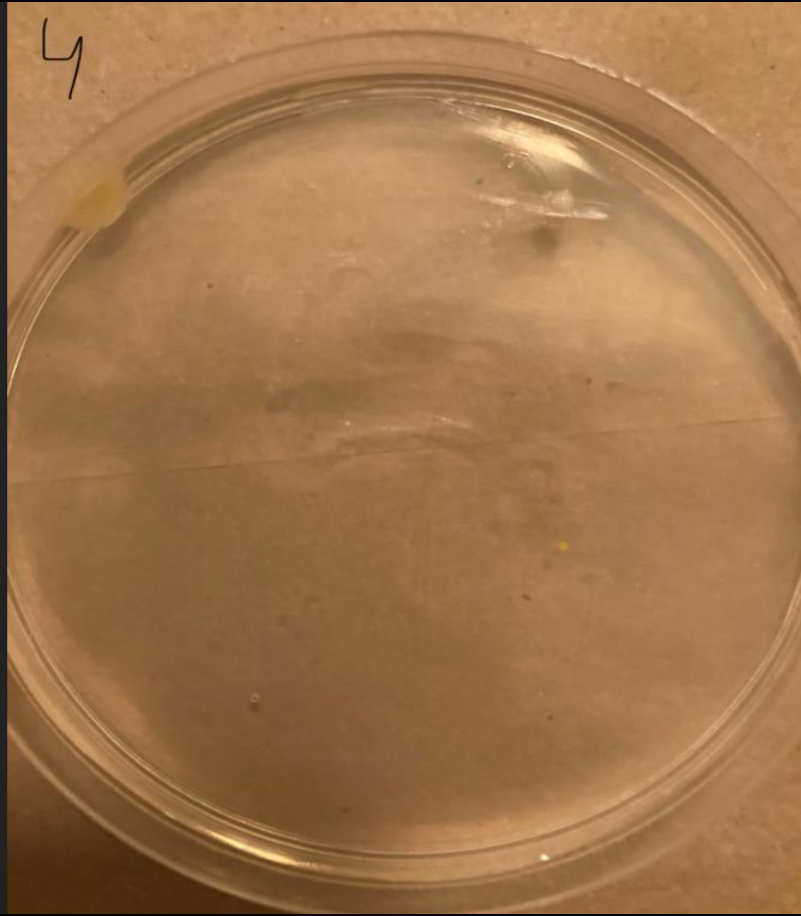
The Control: Day 7

We did not see any bacteria growing on our control for day 7. We compared this petri dish to our other petri dishes that were used to test specific items.



Observation: Day 7

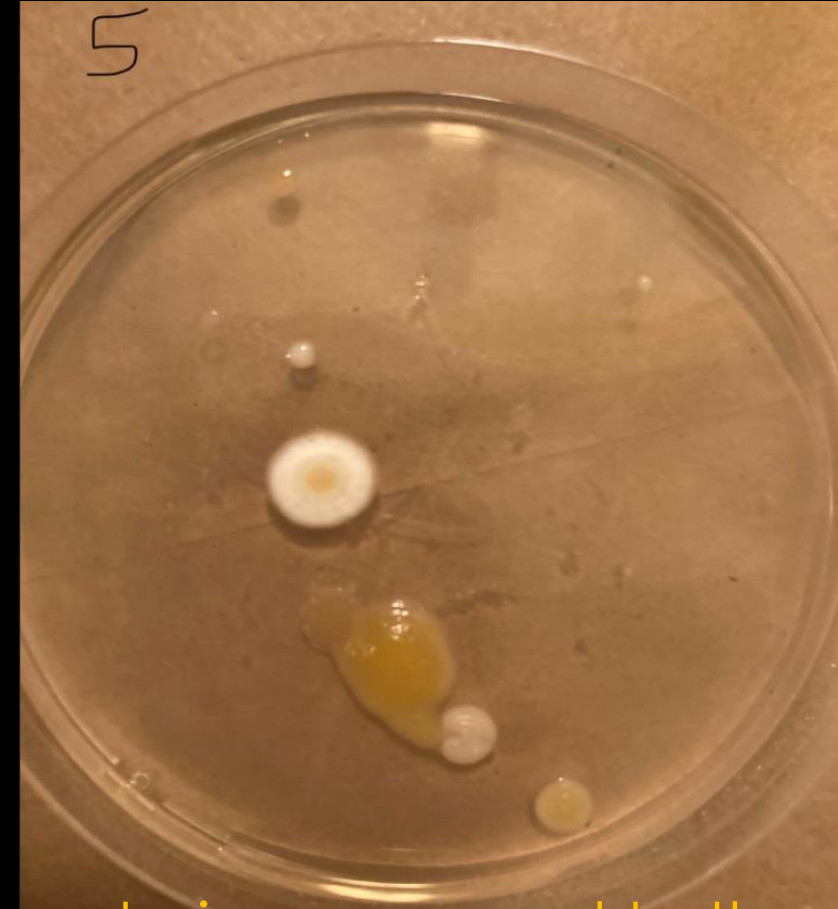
laptop keyboard



household pen

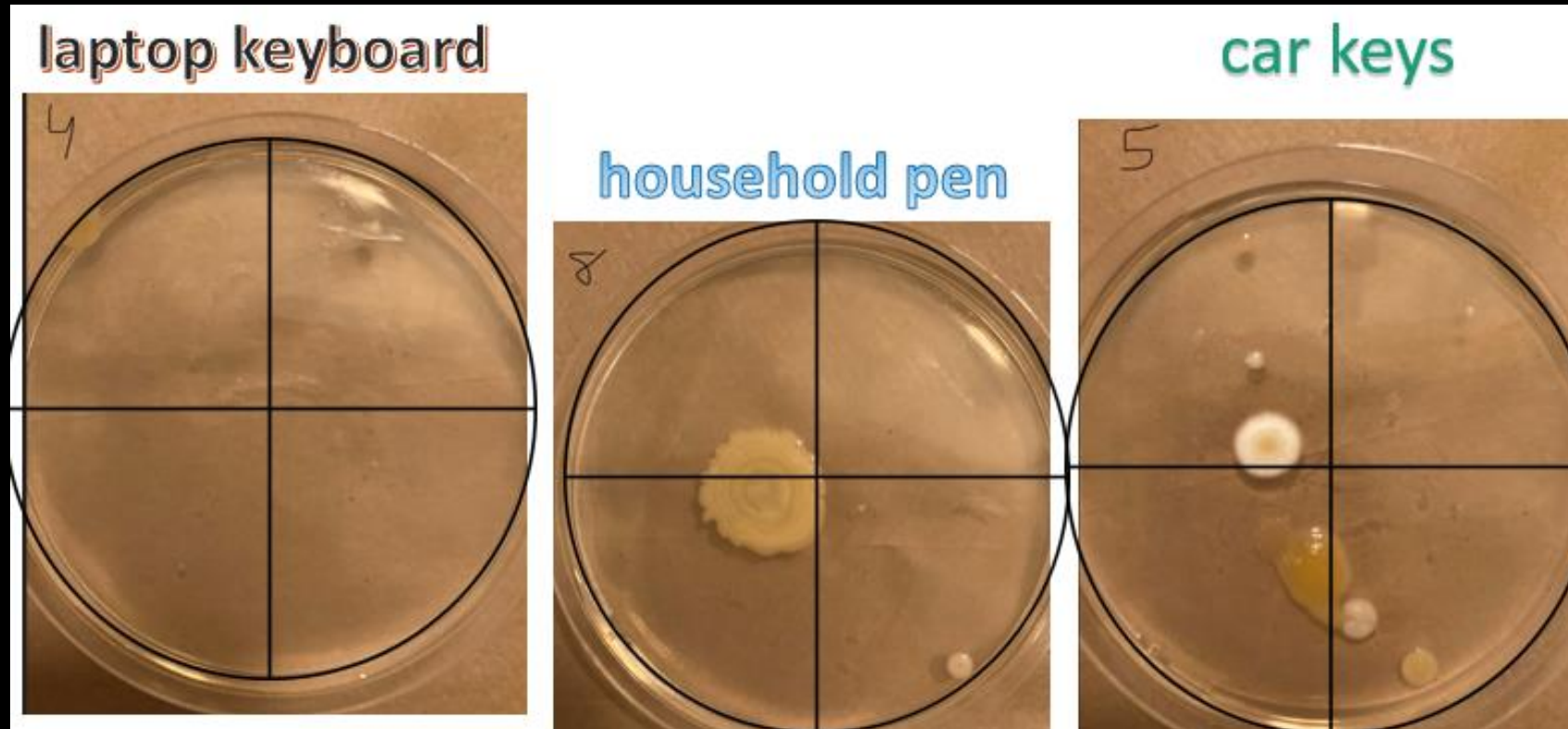


car keys



The household pen and the car keys have a lot of bacteria compared to the laptop keyboard.

RESULTS:



By cutting the petri dish into quarters, we learned that the car keys had the most bacteria on the petri dish. Our hypothesis wasn't correct but by analyzing the bacteria on all three petri dishes, we were able to learn something new.

CONCLUSION:

This experiment is important because it can show people how important hand washing and sanitizing is. We learned that bacteria is all around us and that there are good types and bad types bacteria. We also learned that car keys can have a lot of bacteria and that people should wipe down items that are frequently used to prevent bacteria from growing.



11 high-touch objects to disinfect



Cell phone



Light switches



Computer keyboards



Computer mouse



Doorknobs



Steering wheel



Stick shifts



Remote controls



Refrigerator, faucet and toilet handles