



# **MS. KLEIN'S CLASS EXPERIMENT**

Third Grade

Ms. Klein's Science Class



# IS YOUR HOUSE REALLY THAT CLEAN?

Summary: This experiment will expose how much bacteria is on common household items. This experiment is important because it will demonstrate the importance of handwashing and cleaning common items your home.



# QUESTION:

Which item in your home has the most bacteria?

# HYPOTHESIS:

I think the storage room door knob will have the most bacteria.

- Cat toy
- Remote control
- Storage room door knob

# MATERIALS:

- 3 petri dishes with agar
- 3 cotton swabs
- 1 bacteria kit instruction booklet



# PROCEDURES:

Step 1 Rub the cotton swab on the cat toy.

Step 2 Then rub the swab on the agar and seal the container.

Step 3 Now you need to label your petri dish with: "cat toy."

Step 4 Rub the cotton swab on the remote control.

Step 5 Then rub the swab on the agar and seal the container.

Step 6 Now you need to label your petri dish with: "remote control."

Step 7 Rub a new cotton swab on the storage room door knob.

Step 8 Then rub the swab on the agar and seal the container.

Step 9 Now you need to label your petri dish with: "storage room door knob."

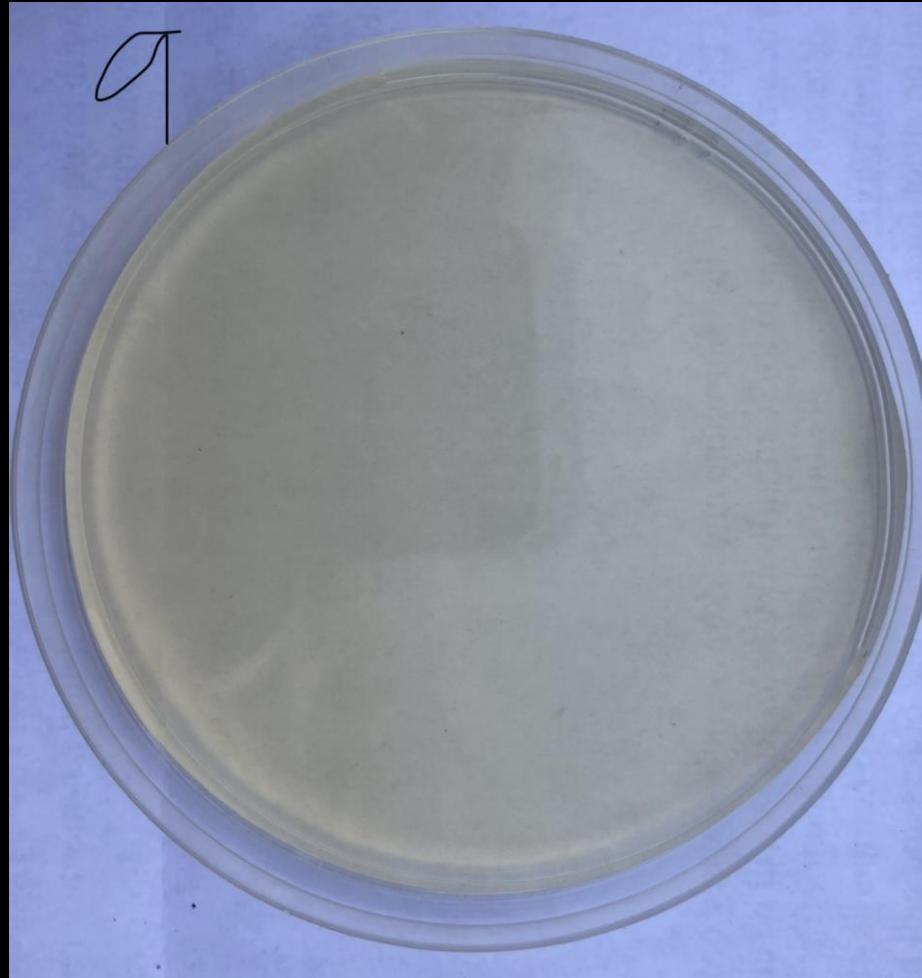
Step 10 Review instruction manual and let the petri dishes sit for one week. During the week, make observations and take photos.



DATA:

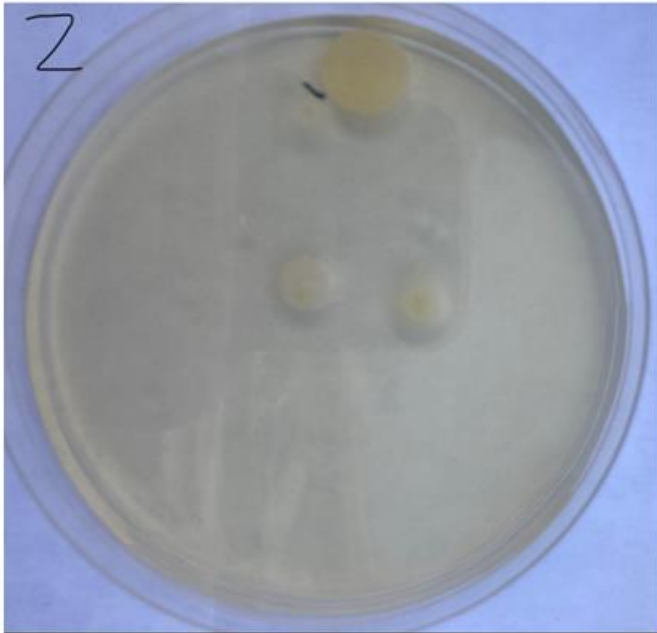
## The Control: Day 3

We did not see any bacteria growing on our control for day 3. We compared this petri dish to our other petri dishes that were used to test specific items.

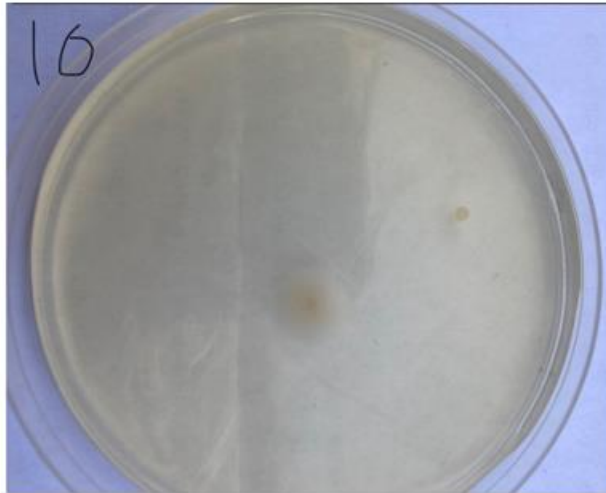


# Observation: Day 3

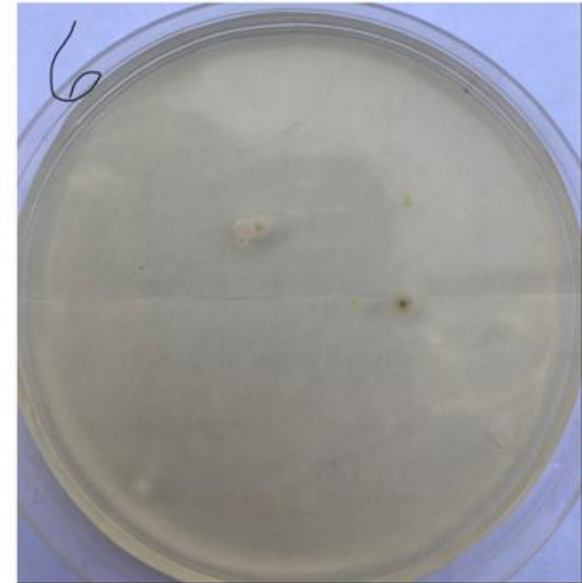
cat toy



storage door knob



remote control

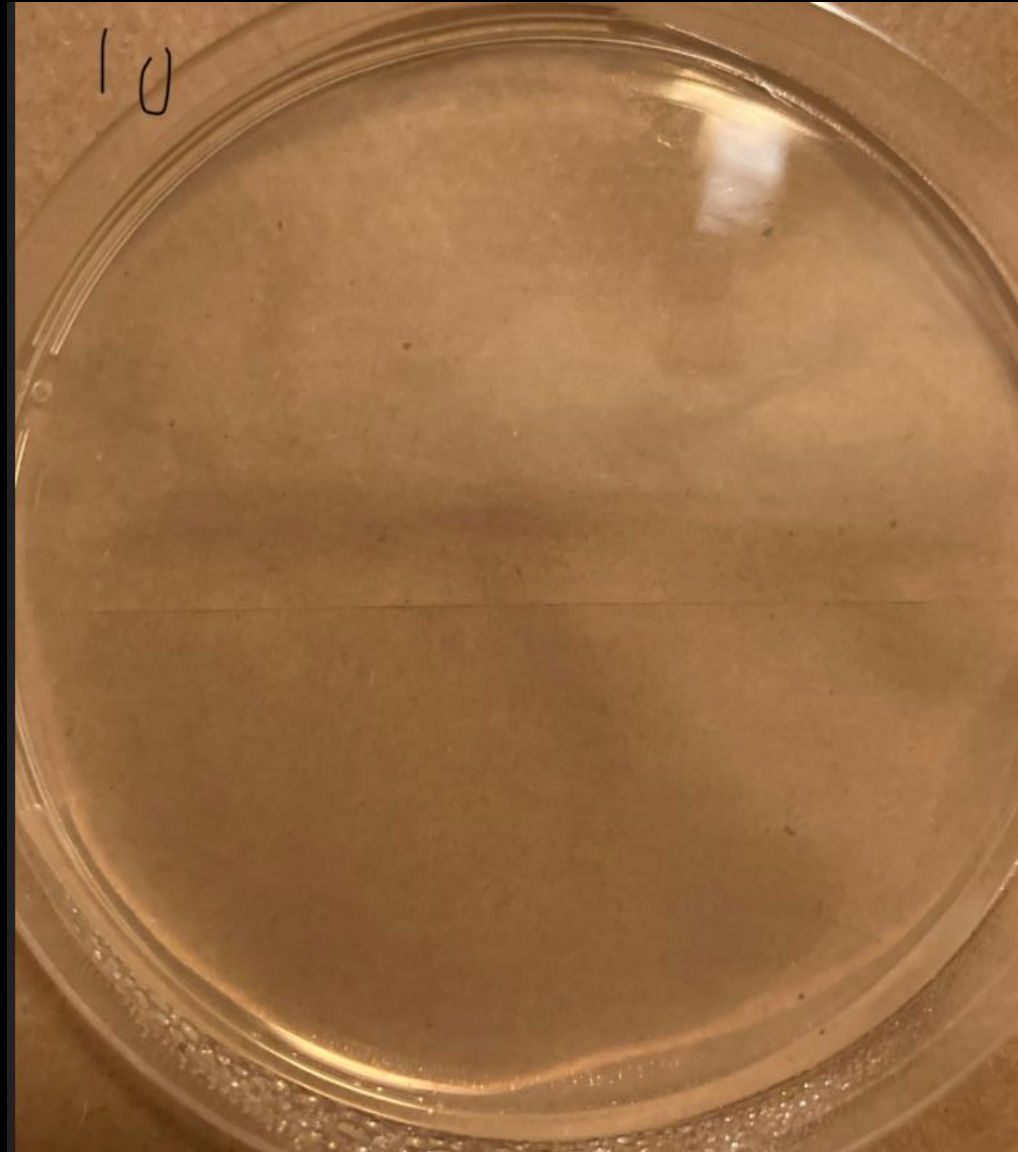


The cat toy has the largest cluster of bacteria growing so far.



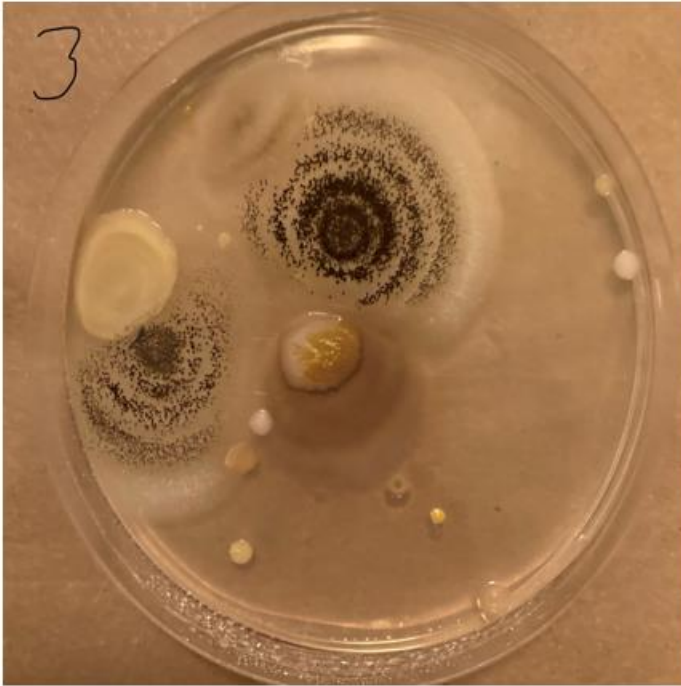
# The Control: Day 7

We did not see any bacteria growing on our control for day 7. We compared this petri dish to our other petri dishes that were used to test specific items.



# Observation: Day 7

cat toy



storage door knob



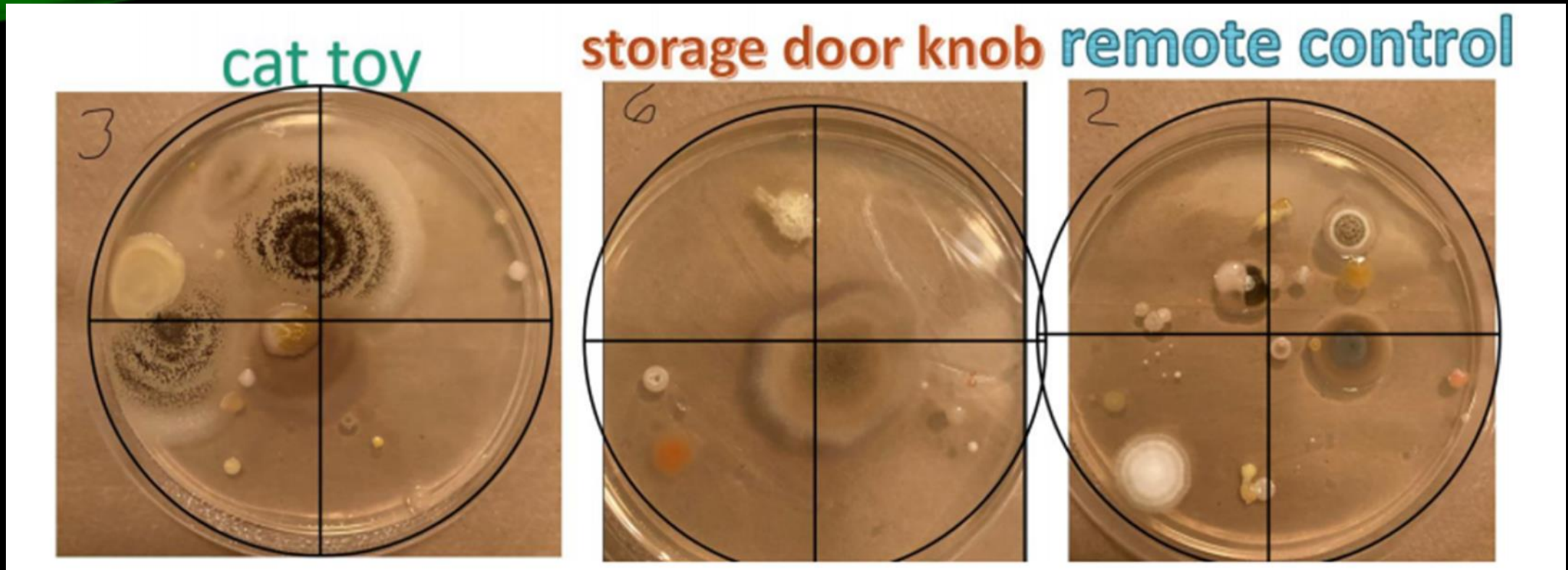
remote control



The cat sponge and remote control both have a lot of bacteria growing on them.



# RESULTS:



By cutting the petri dish into quarters, we learned that the cat toy had the most bacteria on the petri dish. Our hypothesis wasn't correct but by analyzing the bacteria on all three petri dishes, we were able to learn something new.

# CONCLUSION:

This experiment is important because it can show people how important hand washing and sanitizing is. We learned that bacteria is all around us and that there are good types and bad types bacteria. We also learned that your pet's toy can grow a lot of bacteria and that people should disinfect pet toys frequently. In addition, you should also wipe down items that are frequently used like your remote control and the door knobs to prevent bacteria from growing.



## 11 high-touch objects to disinfect



Cell phone



Light switches



Computer keyboards



Computer mouse



Doorknobs



Steering wheel



Stick shifts



Remote controls



Refrigerator, faucet and toilet handles